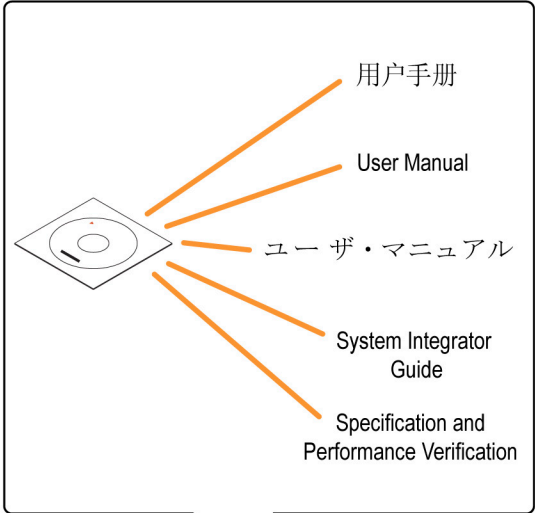
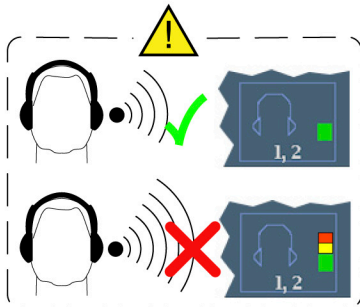


See User Manual  
参照 用户手册  
ユーザ・マニュアルを参照



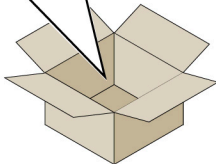
用户手册

User Manual

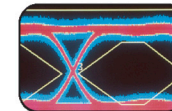
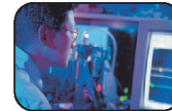
ユーザ・マニュアル

System Integrator  
Guide

Specification and  
Performance Verification



### WFM4000 and WFM5000 Waveform Monitors Quick Start Guide



[www.tektronix.com/manuals](http://www.tektronix.com/manuals)



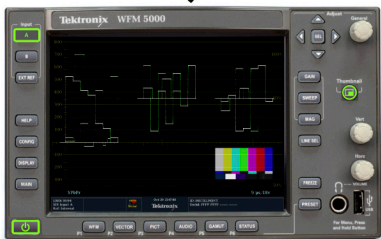
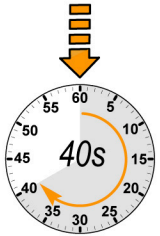
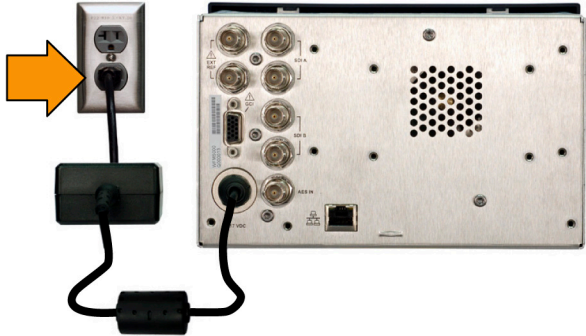
1



See User Manual

参见用户手册

ユーザ・マニュアルを参照

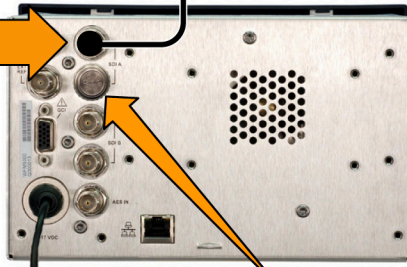


2

Tektronix TG700



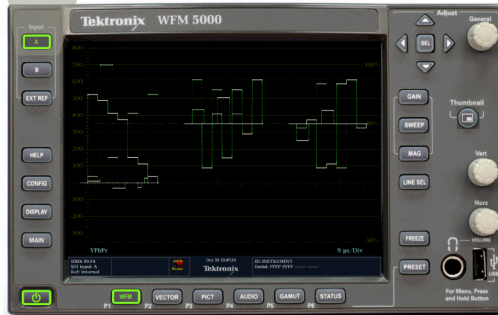
SDI A



75 Ω

A

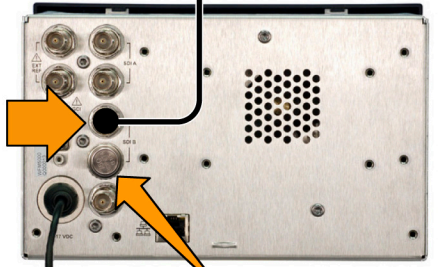
SDI A



Tektronix TG700



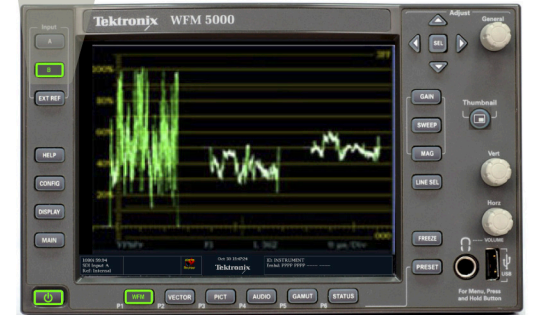
SDI B



75 Ω

B

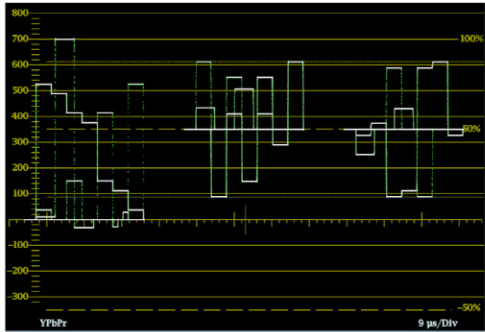
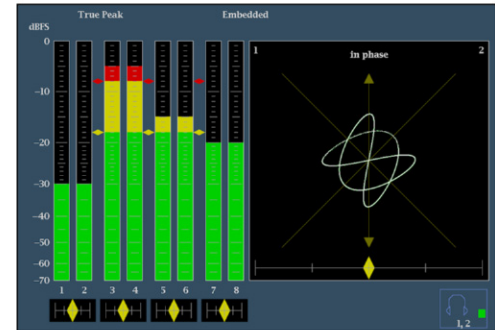
SDI B



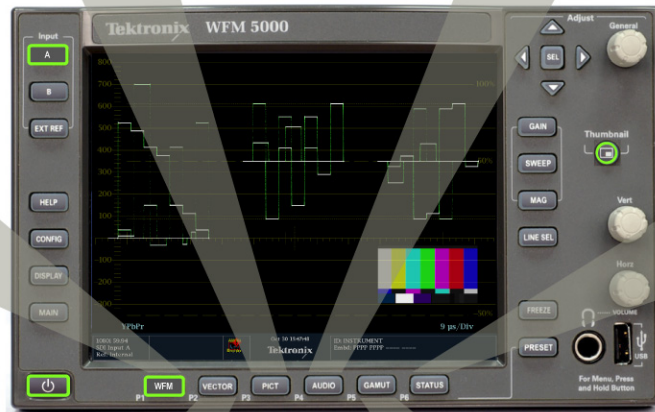


PICT

AUDIO



WFM



STATUS

Video Session

Input: SDI A Data Collect: Running

Signal: Auto 1080i 59.94 - HD SDI 422 Run Time: 0:4, 00:07:41

Format: 352M Payload: Error

SAV Place Err: Y Stuck Bits: ---

Field Length Err: C Stuck Bits: ---

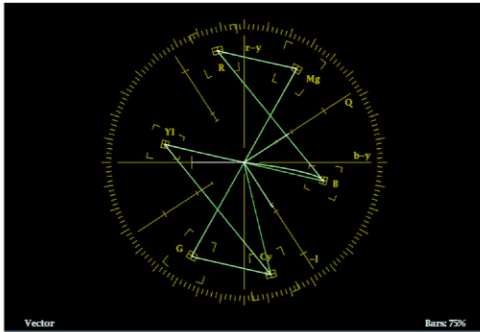
Line Length Err: Y and C Present

Line Number Err: Ancillary Data

Statistics	Status	Err Secs	Err Fields	% Err Fields
RGB Gamut Error	OK	457	2784	99.9854 %
Cmpst Gamut Error	OK	4	7	0.0259 %
Luma Gamut Error	OK	457	2784	99.9854 %
Y Chan CRC Error	OK	7	20	0.0361 %
C Chan CRC Error	OK	7	20	0.0361 %
Y Anc Checksum Error	OK	0	0	0.0000 %
C Anc Checksum Error	OK	5	13	0.0254 %

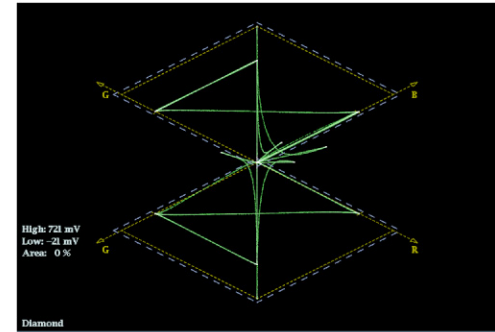
Changed since reset: Yes

Press "select" to reset. Any "arrow key" stops/starts.



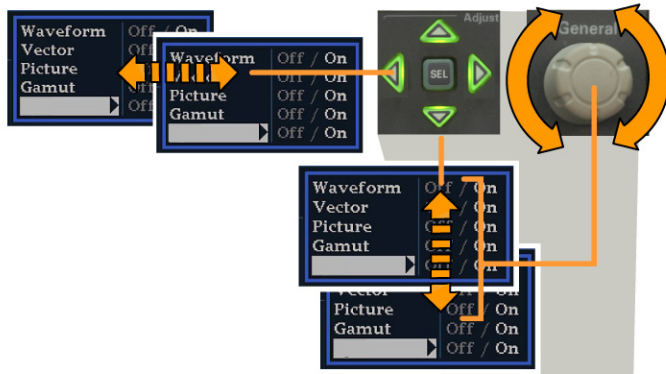
VECTOR

GAMUT

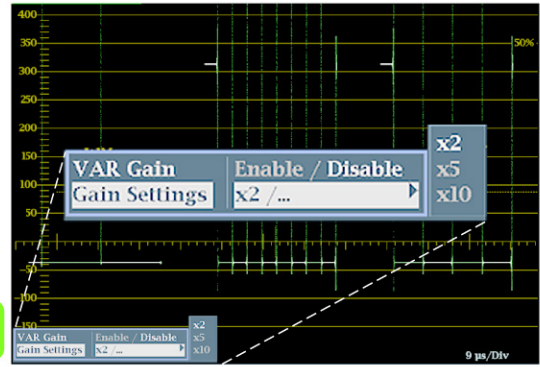




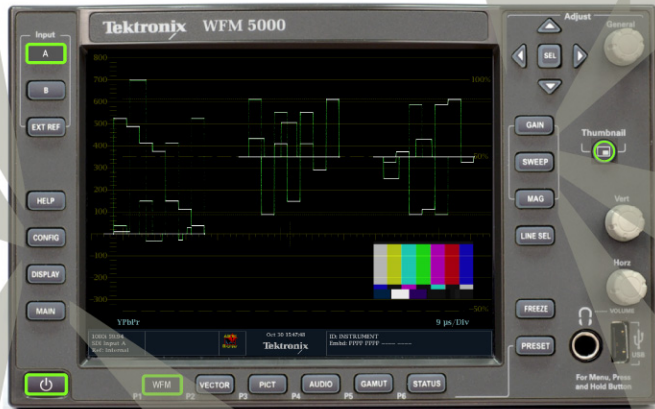
**HELP**



**GAIN**

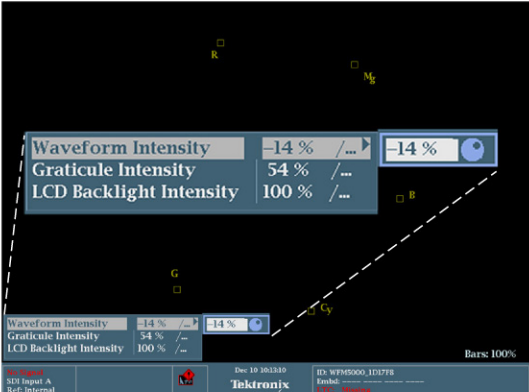
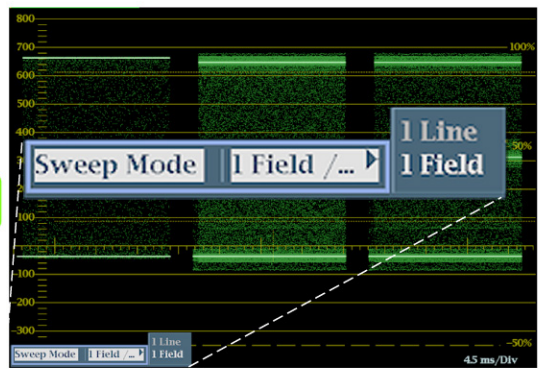


**CONFIG**

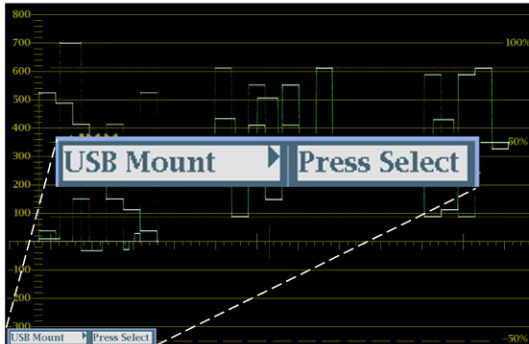


**MAIN**

**SWEEP**



**DISPLAY**



**MAG**

